

# Welcome to our Community Presentation

## CREATING BIRD FRIENDLY HABITAT

By  
Bonnie Tull



Sponsored by



For more information about the Master Naturalist program in Hays County, please go to our website at [haysmn.org](https://haysmn.org) or contact us at [info@haysmn.org](mailto:info@haysmn.org)

# Creating and Enhancing Bird Habitat





**The Three Requirements for Good Habitat**

# Shelter



# Many Nest Box Designs



# All should have some kind of Predator Guard



## Stovepipe Baffles and Hardware Cloth

**Whoops – Sometimes you enhance your habitat a little too well.**





**Ideal nesting spots for hawks or owls**



# Try to conserve natural nesting sites



# Safety and Material for Nesting Birds



**String, Wool, Baffles**



# Food



# Exclusionary Feeders and Oriole Feeder



# Feeder Types



# Compost provides gnats for hummer food



# Suet appeals to most species

Mix 3-4 cups oatmeal and 1 cup raisins in food processor until fine grained. Add 1 jar peanut butter and mix to consistency that can be formed in your hands without sticking. Refrigerate.



# Native Grasses Attract Seed Eaters



Gulf Coast Muhly



Lindheimer Muhly



# Indian Grass



# Little Blue Stem

# Eastern Gama



Eastern Gama Blooms



Lindheimer Silk Tassel

# Optimum Landscape is Really Edge Habitat



Notice upper, lower, and mid stories in landscape

## Example of Layering



**Ground Cover and Understory**

# Native Plants are Best



## A Few Lesser Known but Superb Natives for Central Texas

Red Buckeye or *Aesculus pavia*



Smoke Tree or *Cotinus Obovata*

**Black Haw Viburnum or Prunifolia**



**Arroyo Sweetwood or Myrospermum sousanum**

A close-up photograph of a Beebrush plant (Aloysia Gratisima). The image shows a dense cluster of small, light-colored flowers with prominent, feathery, white bracts. The leaves are small, green, and have a serrated or lobed appearance. The overall texture is very bushy and intricate.

**Beebrush or Aloysia Gratisima – Goldfinches love**

A photograph of a Frost Weed plant (Verbesina virginica). The plant features several upright stems with clusters of small, white flowers. The leaves are large, green, and have a distinctively serrated or lobed margin. The background is a soft-focus green, suggesting a natural outdoor setting.

**Frost Weed or Verbesina virginica**



# Many Ways to Provide Water



# Ways to collect/store water for birds



# Two Choices



# Ways to offer water



**Leave low hanging branches  
where possible**





**Notice rocks in stock tank and branches around water feature**



**If you don't have natural water, add a feature!**

# Ponds for Endless Entertainment



Construction Begins – Summer of 2003 – Prefab Liner Comes Out

# Pond in Early Days after Construction



Pond designed specifically for birds but is a mini ecosystem – always a work in progress



## Five Year Old Pond is Completely Naturalized



Gravel "beach", shallowly set rocks and edges, perching branches

# Pond evolves with time



Notice shallow rock placement

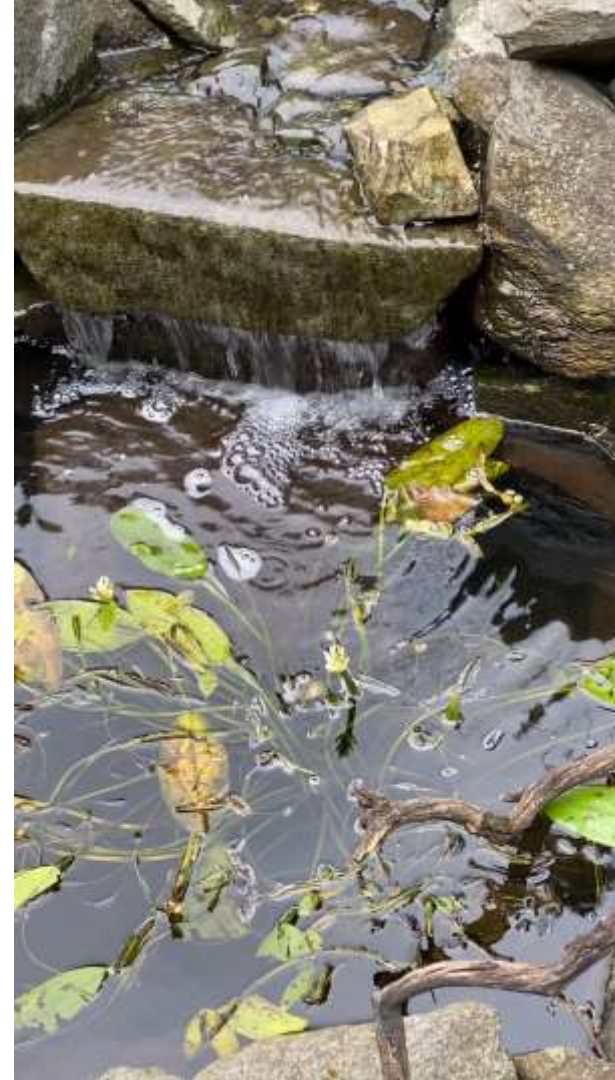


Small rocks with depressions loved by small birds

# Water Sound is an Enhancement



**Great Examples of  
Both Design and  
Sound**



# More Good Pond Examples



**It's a David Attenborough Film every day!**





**Enhancements for Viewing and Photography include  
dead snags and branches**



**Ready made and Make Your Own Branch/Snag holders**





**Dead branches for  
perches**



**Snags around  
feeder**



**If you build it, they will come.**